

# HOW WE SUPPORT ORGANISATIONS TO MEASURE THEIR IMPACT(S)

DR DEEPTI SASTRY | DIRECTOR, INTEGRATIVE SOLUTIONS



APRIL 2023

# ABOUT US

WE PROVIDE MEL EXPERTISE ON CONFLICT AND PEACEBUILDING TO ENVIRONMENTAL PROTECTION, CLIMATE CHANGE, AND WASTE.



**CURRENT CLIENTS:** Unilever Global, UK government, Integrity Global, Tony Blair Institute, Counterpart International.



**LEADERSHIP:** Dr Deepti Sastry (Director) has 20 years' experience in the measurement sector, conducting research, evaluations, designing useable theories of change and measurement frameworks. With a PhD in applied social science. Dr Sastry brings experiential rigour to organisational MEL needs, balancing quality with accessibility and practicality.



**EXPERTISE:** impact investing, quantitative and qualitative impact assessments, research, governance, security sector reform, peacebuilding, countering disinformation, and countering/preventing violent extremism.

WOMAN-OWNED  
AND RUN,  
BOUTIQUE MEL  
CONSULTING  
COMPANY.

# OUR OFFERING

## Bespoke to the needs of the organisation



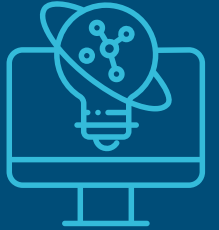
**Example:** recently delivered a strategy document for the Tony Blair Institute on how to structure their measurement systems to meet their evolving programmes.

## Balancing rigour & useability



**Example:** designed a measurement approach for diverse teams in Australian Volunteers International to measure outcomes & contribution to outcomes, balancing rigour of approach with time commitments – offering ‘good enough’.

## Creative & user-facing



**Example:** designed tools for social enterprises to measure and communicate their impacts. This includes videographies, written case studies, dashboards, multimedia etc.

# EXAMPLES OF OUR WORK

- ★ **Start Network Impact report (2016):**

<https://start-network.app.box.com/v/ImpactReport2016>

- ★ **Endline evaluation of the Private Enterprise Programme Ethiopia (2020):**

[https://www.dropbox.com/s/pchicreopujyyns/PEPE%20Impact%20evaluation%20report%202021\\_FINAL.pdf?dl=0](https://www.dropbox.com/s/pchicreopujyyns/PEPE%20Impact%20evaluation%20report%202021_FINAL.pdf?dl=0)

- ★ **Endline evaluation of the IPSSJ (security and justice) programme in Nepal (2021):**

[https://www.dropbox.com/s/xjz2p7apu9ytdld/SS%26J%20Report\\_High%20res\\_FINAL.pdf?dl=0](https://www.dropbox.com/s/xjz2p7apu9ytdld/SS%26J%20Report_High%20res_FINAL.pdf?dl=0)

- ★ **Videography of Hasiru Dala Innovations (HDI) (2023):**

[https://drive.google.com/file/d/1n\\_k4KPOWvKAWUDVnUmUkzmW3UdyVPaOW/view](https://drive.google.com/file/d/1n_k4KPOWvKAWUDVnUmUkzmW3UdyVPaOW/view)





# EXPERTS



**DR DEEPTI SASTRY**  
MEL specialist  
impact investing & fragile  
conflict affected states



**PROMILA BISHNOI**  
MEL specialist (India/SE Asia)  
impact investing/circular  
economy



**KADISON EDISON**  
MEL specialist (Kenya)  
impact investing/circular  
economy



**NOMNOTHO GUMEDE**  
MEL specialist (S Africa)  
impact investing/circular  
economy



**SHUMETE BELETE**  
MEL specialist  
(Ethiopia) private sector  
development



**JOHN LUNALO**  
Database expert

# REFERENCES



## **MS CIANA-MARIE PEGUS**

MANAGER, PALLADIUM GROUP

**RELATIONSHIP:**

Programme director for TRANSFORM

**CONTACT:**

[ciana-marie.pegus@thepalladiumgroup.com](mailto:ciana-marie.pegus@thepalladiumgroup.com)



## **MS GRACE TER-HAAR**

UNILEVER CONTACT FOR TRANSFORM

**RELATIONSHIP:**

Point of contact for contract

**CONTACT:**

[grace.ter-haar@unilever.com](mailto:grace.ter-haar@unilever.com)



## **JAKE PHELAN**

MONITORING, EVALUATION, & LEARNING MANAGER  
AT AUSTRALIAN VOLUNTEERS INTERNATIONAL

**RELATIONSHIP:**

Point of contact for contract

**CONTACT:**

[jphelan@australianvolunteers.com](mailto:jphelan@australianvolunteers.com)

